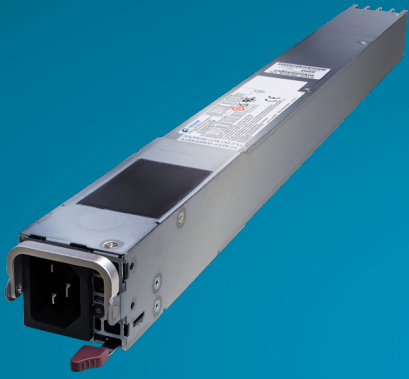


# CPR-3621-1M1

## 3600W Slim Power Supply AC/DC to DC Dual-input Redundant



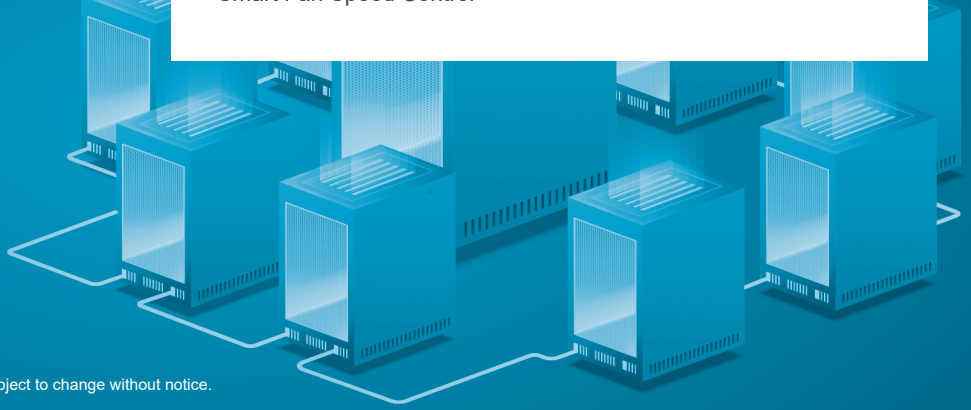
### FEATURES

- High Efficiency: 96%@50%Load
- Hot Swappable
- PMBus, SMBus, I2C functions
- In-system Firmware Upload
- Fully digital power supply
- Smart Fan Speed Control



■ Dimension : 480 x 45 x 40 mm (D x W x H)

▲ Product details and image are for reference and final product is subject to change without notice.



## SPECIFICATIONS

### ▶ INPUT

Voltage	AC input: 90 - 264 Vac DC input: 180 - 300 Vdc
Frequency	47 - 63Hz
Current	19.4 ~ 14.5@208 ~ 264Vac

### ▶ PFC

Load (%)	Output Power
10%	90%
20%	96%
50%	98%
100%	99%

\* These requirements are within the Energy Star® Program Requirements for Computer Servers.

### ▶ OUTPUT

Parameter	12V	12Vsb
Max Load	300A @208 ~ 240Vac/240Vdc	4.5A
Regulation	11.5 ~ 12.6V (>50% Load) 11.5 ~ 12.66V (0 ~ 50% Load)	11.40 ~ 12.6V
Ripple & Noise	120mVp-p	120mVp-p

### ▶ PROTECTION, RELIABILITY, WARRANTY

Over Current Protection (OCP)  
Over Power Protection (OPP)  
Over Voltage Protection (OVP)  
Under Voltage Protection (UVP)  
PFC Over Voltage Protection (Bulk OVP)  
Over Temperature Protection (OTP)  
Holdup Time: 11msec @ 75% Load  
MTBF: >400,000 hours @ 100% Load, 30°C Ambient  
Warranty: 3 Years

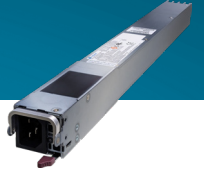
### ▶ ENVIRONMENTAL

Temperature	Operating : 0 to 50°C Non-operating : -40 to 70°C / Ambient
Altitude	Operating: to 5,000 meters Non-operating: to 10,580 meters
Relative Humidity	Operating: 5% to 90% RH, Non-condensing Storage: 5% to 95% RH, Non-condensing

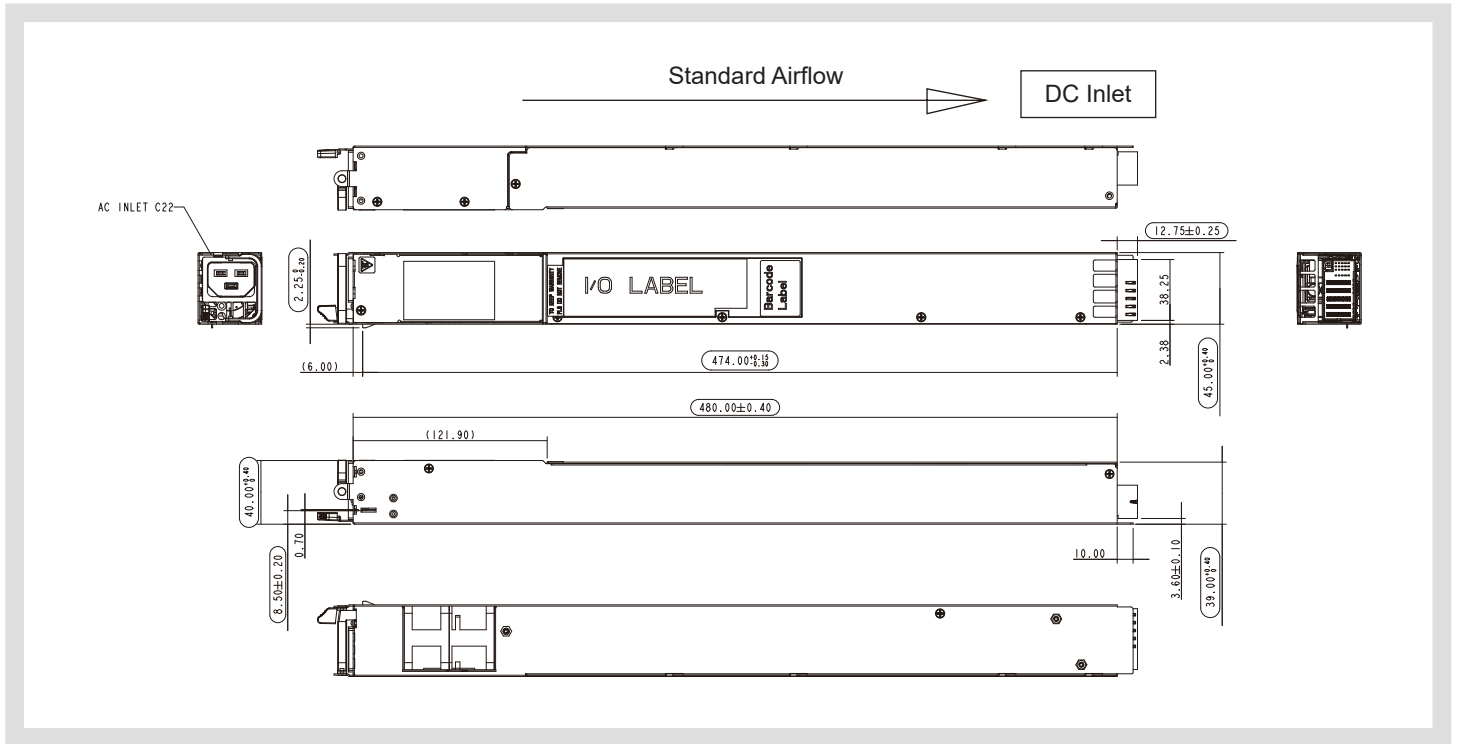
## SAFETY AND COMPLIANCE

UL, CE, CCC, CB, FCC class A, CISPR Class A, RoHS, BSMI

# CPR-3621-1M1



## MECHANICAL DRAWING



### CONNECTORS

AC Inlet	IEC 320 C22 with 20A/250Vac
DC Output	TE 2204456-3
DC Output Mating	TE 2204416-3

### OUTPUT CONNECTOR PIN ASSIGNMENTS

PIN#	Description	I/O	Active	Pin Length	PIN#	Description	I/O	Active	Pin Length
P1	DC Return	O	Power Pin	Standard	B2	DC Return	O	Power Pin	Standard
P2	DC Return	O	Power Pin	Standard	C2	DC Return	O	Power Pin	Standard
P3	+12V	O	Power Pin	Standard	D2	RS GND	O	Power Pin	Standard
P4	+12V	O	Power Pin	Standard	B4	I2C SDA	I/O	Analog	Standard
LP1	+12V	O	Power Pin	Standard	A3	PS ON/OFF	I	Low	Short (by 1mm)
LP2	DC Return	O	Power Pin	Standard	E3	I2C SCL	I/O	High / Low	Standard
A1	A1 (MSB address)	I/O	Analog	Standard	B3	Reserved pin	spare	Reserved	Standard
B1	A0 (LSB address)	I/O	Analog	Standard	D4	WakeUp_Bus	I/O	High	Standard
C1	+12Vsb	O	Power Pin	Standard	E4	DC GOOD	O (+12V)	High	Standard
D1	+12Vsb	O	Power Pin	Standard	A4	I-share bus	I	High / Low	Standard
E1	+12Vsb	O	Power Pin	Standard	D3	Reserved pin	spare	Reserved	Standard
E2	12V RS	O	Power Pin	Standard	C4	SMBAAlert	I/O	High	Standard
A2	DC Return	O	Power Pin	Standard	C3	Reserved pin	spare	Reserved	Standard



Compuware Technology Inc.

Tel: 886-2-8226-3936 Address: 5F., No. 232, Liancheng Rd., Zhonghe Dist., New Taipei City 235, Taiwan (R.O.C.)



[www.compuware-us.com](http://www.compuware-us.com)