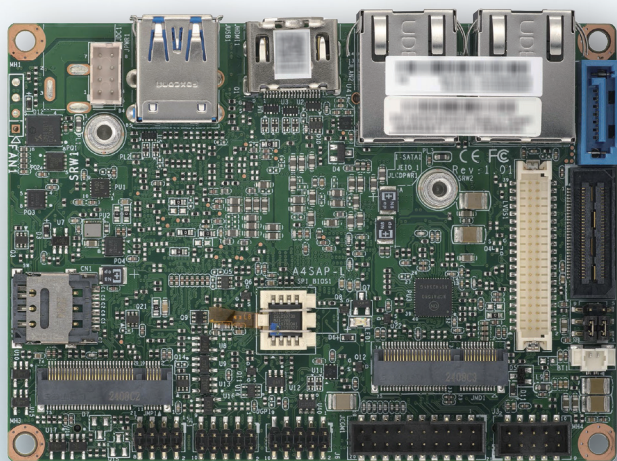


IoT Motherboard

CME-IAP-S



KEY FEATURES

- Intel® processor N97 (12W, 4C)
- DDR5 4800 MT/s SODIMM, up to 16GB
- Dual Realtek RTL8111Ki (1GbE each)
- 1 HDMI, 1 48-bit LVDS, Intel® HD Graphic 2 independent displays

⚠ Product details and images may change without notice.

MAIN BOARD	
Pico-ITX	
Dimension	100 x 72mm

PROCESSOR	
CPU	Intel® N97
Turbo Frequency	3.6 GHz
CPU TDP	12W

SYSTEM MEMORY	
Memory	1 x DDR5, 4800MT/s SODIMM, up to 16GB

EXPANSION SLOTS	
M.2	1 x M.2 B-Key 2242/3042 with Nano SIM (PCIe x1/SATA 3.0/USB 2.0/USB 3.2) 1 x M.2 E-Key 2230 (PCIe x1/USB 2.0)

POWER CONNECTOR	
2 x 4P Box Header, 12V	

INPUT / OUTPUT	
LAN	Dual Realtek RTL8111Ki 1 GbE each
Video Display	1 x HDMI: Rev 1.4b 1 x LVDS: Dual channel 48-bit
I/O Devices	1 x COM Header (supports two RS232/422/485 ports) 2 x USB 3.2 Gen2 x1 Type-A ports and 1 x USB Header (supports two USB 2.0 ports) 1 x HD Audio Header with Line-out and Mic-in 1 x SATA 3.0 Port
EI/O (Option)	HDMI, 1 x PCIe x1, 2 x USB 2.0, eSPI, SMBus, +5 Vsb, +12 Vsb

ENVIRONMENT	
Temperature	Operating: 0° to 60°C Non-operating: -40° to 85°C
Humidity	Operating: 8% to 90% (non-condensing) Non-operating: 10% to 95% (non-condensing)

OS	
Windows 10/11 IoT Enterprise Linux Ubuntu 22.04 LTS/ 24.04 LTS	

